

# MANAGEMENT CHARTS

## Charts

### Content

1. Monthly turnover
2. Weekly pipe
3. Break balance



From the management reports section reports and views can be selected that give a myriad of management info.

The above mentioned charts are just an impression of the possibilities and the user friendliness of the graphs.

If required we can also deliver a stand-alone utility that can only be run by a select group (i.e. managers). It will be possible to either view the graphs or print 'column reports' with the figures.

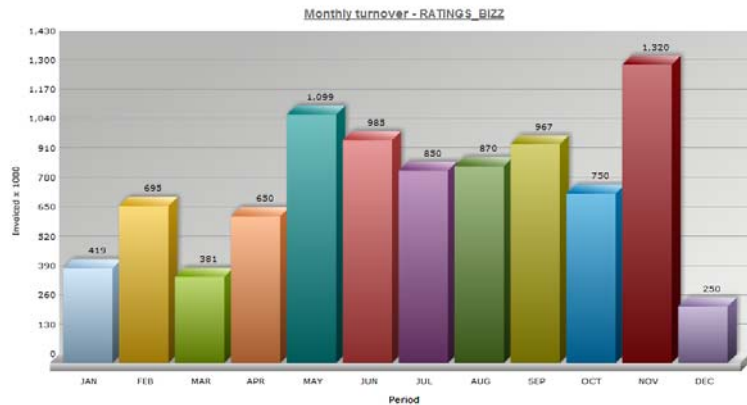
# MANAGEMENT CHARTS

Charts

## Monthly Turnover



From the management reports section choose the monthly turnover and within seconds a clear view is presented of the way sales are developing. Apart from the total turnover per month the dashboard also gives up to date info on the total secondage sold and, maybe even more significant, on the price per second that was realised.



Monthly Turnover

Variables

## Settings Monthly Turnover

- Month by month
- Per Channel, region or sales rep
- all or single product groups

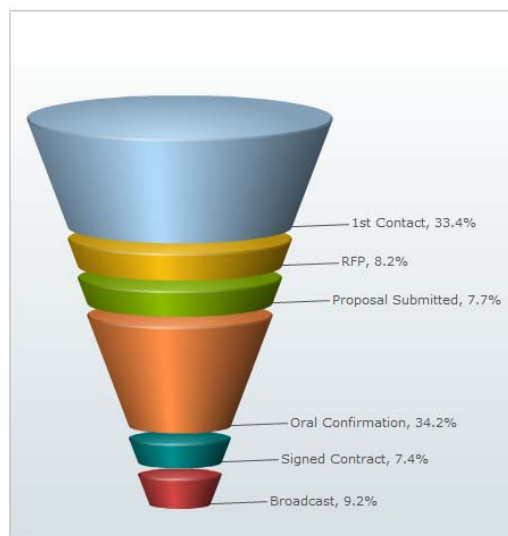
# MANAGEMENT CHARTS

Charts

## Weekly pipe



From the management reports section choose the weekly pipe and you get reports on your sales. Reports on region combined or reports that show exactly how a salesrep is performing.



Weekly pipe



Average days till signed



Total signed

Weekly pipe

Variables

## Settings Weekly pipe

- Chosen period, date to date
- Per Channel, region or sales rep

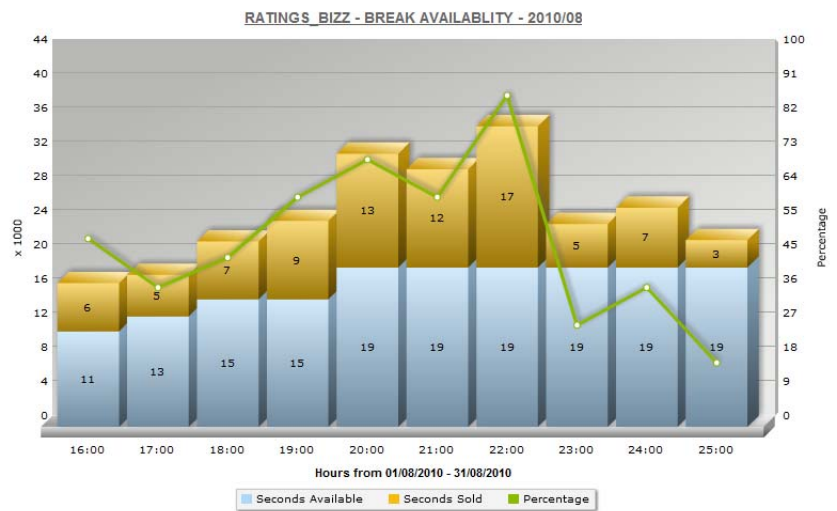
# MANAGEMENT CHARTS

## Charts

### Break balance



From the Breakcharts menu choose the availability report and you get a clear view of available seconds in the month of August.



Break balance

## Variables

### Settings Break balance

- Chosen period, date to date or day by day.
- Per Channel, region or demographic group